



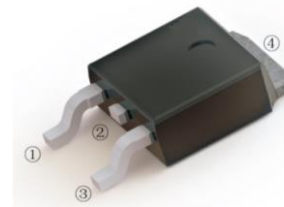
## SSCF1008T8

### 10.0Amp Super Fast Recovery Rectifiers

#### ● Features

- ✧ The plastic package carries Underwriters Laboratory
- ✧ Flammability Classification 94V-0
- ✧ Construction utilizes void-free molded plastic technique
- ✧ Low reverse leakage
- ✧ High forward surge current capability
- ✧ High temperature soldering guaranteed 260°C/10 seconds at terminals

#### ● PIN configuration



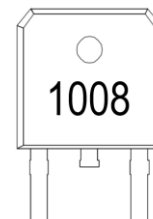
**TO-252**



**Circuit Diagram**

#### ● Mechanical Data

- ✧ Case: Molded plastic body
- ✧ Terminals: Solder plated, solderable per MIL-STD-750, Method 2026
- ✧ Polarity: Polarity symbol marking on body
- ✧ Mounting Position: Any



**Marking(Top View)**

#### ● Absolute maximum rating @T<sub>A</sub>=25°C

Parameter	Symbol	Value	Unit
Maximum Repetitive Peak Reverse Voltage	V <sub>RRM</sub>	800	V
Maximum RMS Voltage	V <sub>RMS</sub>	560	V
Maximum DC Blocking Voltage	V <sub>DC</sub>	800	V
Maximum Average Forward Rectified Current @T <sub>C</sub> =110°C	I <sub>(AV)</sub>	10	A
Non-Repetitive Peak Forward Surge Current@ t=8.3ms	I <sub>FSM</sub>	200	A
Maximum Instantaneous Forward Voltage @10A	V <sub>F</sub>	2.5	V
Maximum DC Reverse Current at rated DC Blocking Voltage	I <sub>R</sub>	5 200	μA
Maximum Reverse Recovery Time	T <sub>rr</sub>	35	ns
Typical Thermal Resistance	R <sub>QJC</sub>	2.5	°C/W
Operating Temperature	T <sub>J</sub>	-55 ~ +150	°C
Storage Temperature	T <sub>STG</sub>	-55 ~ +150	°C



## ● Typical Performance Characteristics

FIG. 1- DERATING CURVE OUTPUT RECTIFIED CURRENT

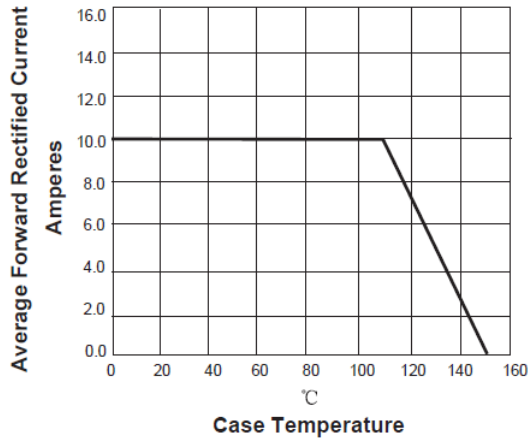


FIG. 2-MAXIMUM NON-REPETITIVE PEAK FORWARD SURGE CURRENT PER LEG

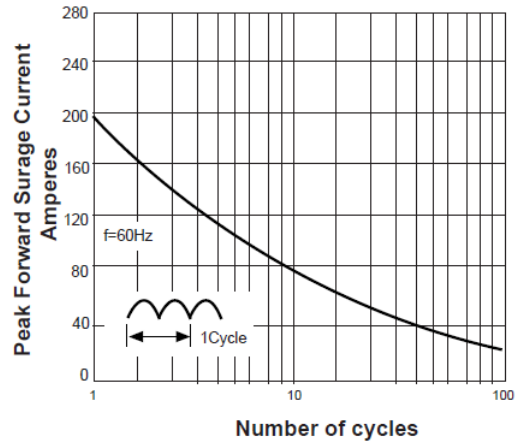


FIG. 3-TYPICAL FORWARD VOLTAGE CHARACTERISTICS

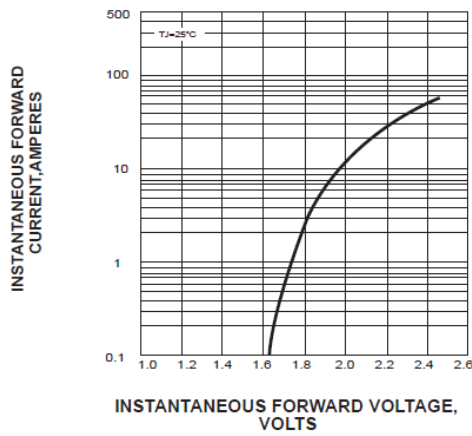
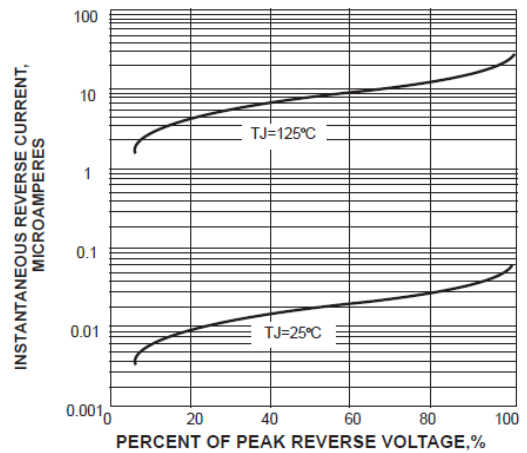


FIG. 4-TYPICAL REVERSE LEAKAGE CHARACTERISTICS



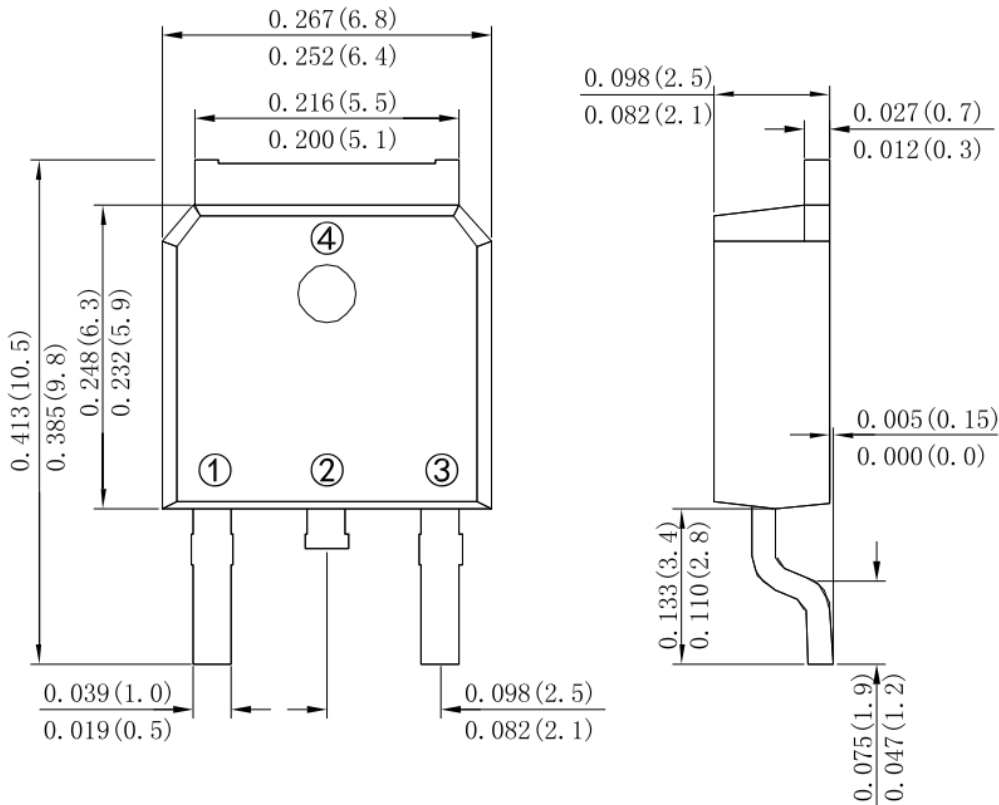


## ● Package Information

### Ordering Information

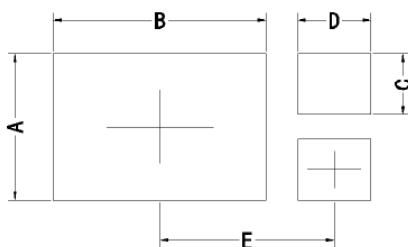
Device	Package	Marking	Qty per Reel	Reel Size
SSCF1008T8	TO-252	1008	3000	13 Inch

### Mechanical Data



**Dimensions in inches and (millimeters)**

### Recommended Pad outline



Symbol	Unit (mm)	Unit (inch)
A	6.10	0.240
B	7.57	0.298
C	1.42	0.056
D	2.76	0.109
E	6.64	0.261



## DISCLAIMER

AFSEMI RESERVES THE RIGHT TO MAKE CHANGES WITHOUT FURTHER NOTICE TO ANY PRODUCTS HEREIN TO IMPROVE RELIABILITY, FUNCTION OR DESIGN. AFSEMI DOES NOT ASSUME ANY LIABILITY ARISING OUT OF THE APPLICATION OR USE OF ANY PRODUCT OR CIRCUIT DESCRIBED HEREIN; NEITHER DOES IT CONVEY ANY LICIENCE UNDER ITS PATENT RIGHTS, NOR THE RIGHTS OF OTHERS.

THE GRAPHS PROVIDED IN THIS DOCUMENT ARE STATISTICAL SUMMARIES BASED ON A LIMITED NUMBER OF SAMPLES AND ARE PROVIDED FOR INFORMATIONAL PURPOSE ONLY. THE PERFORMANCE CHARACTERISTICS LISTED IN THEM ARE NOT TESTED OR GUARANTEED. IN SOME GRAPHS, THE DATA PRESENTED MAY BE OUTSIDE THE SPECIFIED OPERATING RANGE (E.G., OUTSIDE SPECIFIED POWER SUPPLY RANGE ) AND THEREFORE OUTSIDE THE WARRANTED RANGE.